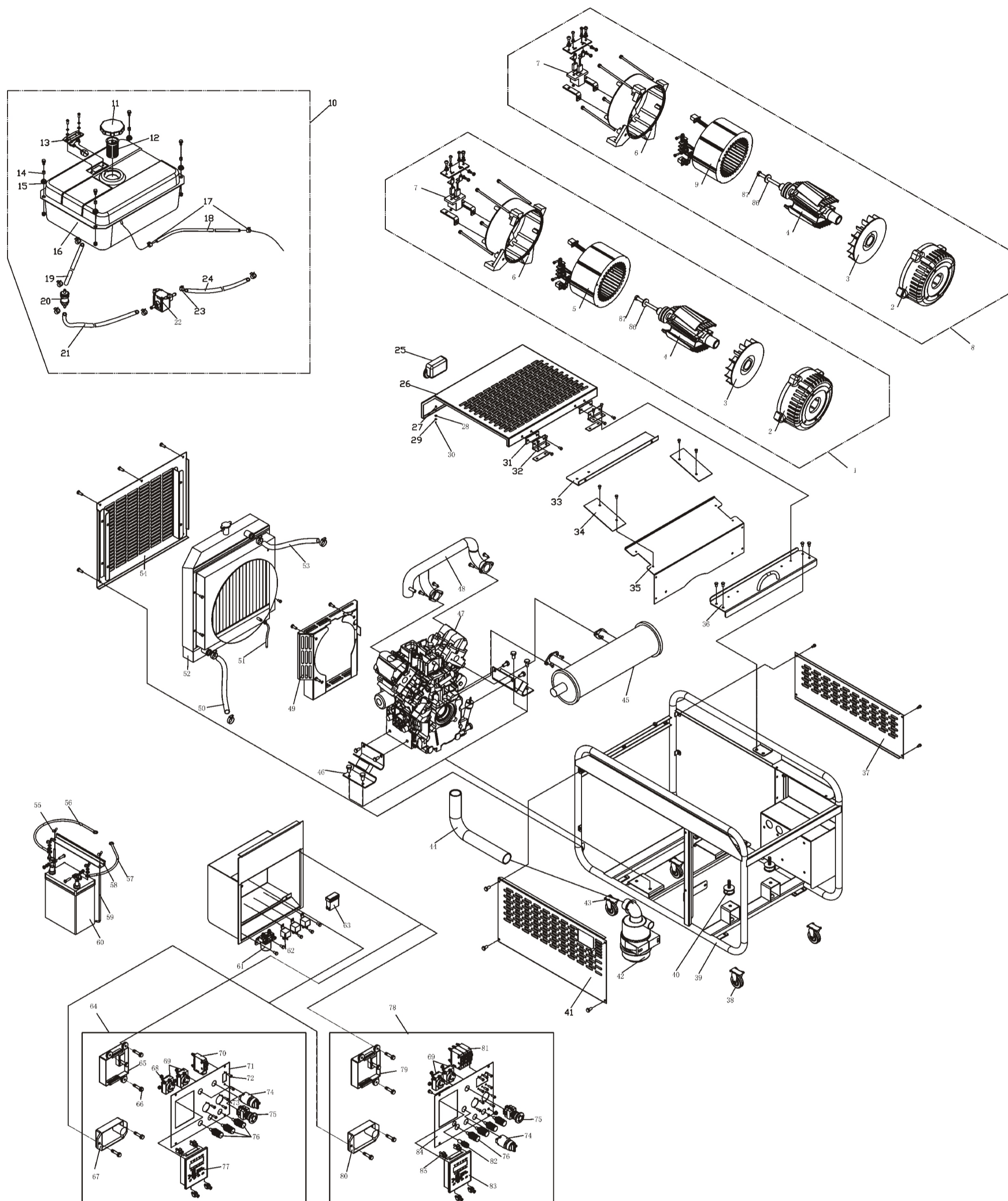


ASSEMBLY AND PARTS ALBUM

KDE12EA/EA3



No.	Part.No	Description	Qty.	No.	Part.No	Description	Qty.	No.	Part.No	Description	Qty.	No.	Part.No	Description	Qty.
1	KT12	Motor Assembly	1	23	KM168F-10011	Oil Pipe Clip	6	45	KDE12E-10100	Muffe Weldment	1	67	PLY-DAVR-95S	Auto Voltage Adjustor	1
2	KT245-00001	Front-end Cover	1	24	KDE12-14002	Oil Vent -pipe of Electric Pump	1	46	KDE12E-12200	Shock pad of Engine	2	68	GB/T6170-2000	Nut M4	8
3	KT245-01004	Fan	1	25	KDE19ST3-08001	Manual Sheath	1	47	KM2V80	Engine Assembly	1	69	250V-26A	Single Phase Receptacle	4
4	KT245-01100	Rotor Assembly	1	26	KDE12E-08001	Top Cover Plate	1	48	KDE12E-01100	Air Intake Pipe	1	70	D50-1620 16A	Breaker	1
5	KT245-02000	Stator Assembly	1	27	GB/T6170-2000	Nut M3	2	49	KDE12E-01001	Wind Wheel Hood Shield	1	71	KDE12EA-13110H	Instrument Panel (Single Phase)	1
6	KT245-00002	Back-end Cover	1	28	KGE12E-08103	Shock pad	2	50	KDE12ST-11001	Water Tank Vent-pipe	1	72	GB/T818-2000	Screw M4X10	8
7	KT245-03000	Carbon Brush	2	29	GB/T97.1-1985	Plain gasket 3	2	51	KDE12E-11003	Water Tank Drain-pipe	1	73	GB/T818-2000	Screw M4X30	8
8	KTS12	Motor Assembly	1	30	GB/T818-2000	Screw M3X8	2	52	KDE12T3-10200	Radiator Assembly	1	74	Jk427	Ignition Switch	2
9	KTS245-02000	Stator Assembly	1	31	KGE12EW-08001	Chock	4	53	KDE12E-11002	Water Tank Intake Pipe	1	75	HVV411ER	Urgency Stop Key	2
10	KDE12E-14000	Fuel Tank Assembly	1	32	KGE12E-08110	Hinge Subassembly	2	54	KDE12E-03010	Water Pipe Protecting Weldment	1	76	M8	Connection Pole Output	7
11	5GF-LDE-07200	Fuel Tank Cover Assembly	1	33	KDE12E-030004	Wind Proof Plate(II)	1	55	GB/T62-1988	Butterfly Nut M6	2	77	PLY-MB3-D1	Smart Control Module	1
12	KM168F-10004	Oil Filler Strainer	1	34	KDE12E-03003	Wind Proof Plate(I)	2	56	KDE12EA-13210(R)	Storage Battery Positive Connecting Thread	1	78	KDE12EA3-13100H	Instrument Assembly (Three Phase)	1
13	KGE12E-11200	Oil Gage Subassembly	1	35	KDE12E-03020	Wind Proof Plate Welding	1	57	KDE12EA-13210(B)	Storage Battery Negative Connecting Thread	1	79	PLY-MB3-C3	Smart Control Module	1
14	KDE5000X-03004	Sheath	4	36	KGE12E-08200	Supporting Beam Weldment of Top Cover	1	58	KDE6500E-03003	Storage Battery Pressure Plate	1	80	PYL-DAVR-95S3	Auto Voltage Adjustor	1
15	KDE5000X-03003	Shock pad	4	37	KDE12E-03001	Protecting Plate(I)	1	59	KDE6500E-03004	Pressure Plate	2	81	D50/1620 36.9A	Breaker	1
16	KDE12E-14100	Fuel Tank Weldment	1	38	KGE12E-18200A	Rotative Truckle	2	60	36AH-12V	Storage Battery	1	82	BX210C	Fuseholder	1
17	KDE168F-10013	Oil Return Pipe Clip	2	39	KDE12E-03100	Frame Weldment	1	61	QDC-100	Warm-up Relay	1	83	PLY-MB3-D3	Smart Display	1
18	KDE12E-14003	Fuel Tank Return Pipe	1	40	KDE12E-12100	Shock pad of Generator	2	62	HFV4 12V 20A	Micro Relay	3	84	KDE12EA-13110H	Instrument Panel (Three Phase)	1
19	KDE12E-14001	Fuel Tank Vent-pipe	1	41	KDE12E-03002	Protecting Plate(II)	1	63	Bx2041	Quadruplex Protective Fuse Box	1	85	KDE6700TA-13410	Display Orientation Assembly	8
20	KGE12E-11010	Papery Cleaner	1	42	KM2V80-07200	Air Cleaner Subassembly	1	64	KDE12EA-13100H	Instrument Assembly (single)	1	86	KT245-00008	Hollow Bolt Gasket	1
21	KDE12E-14004	Oil Intake Pipe of Electric Pump	1	43	KGE12E-18100A	Rotor Truckle	2	65	PLY-MB3-C1	Smart Control Module	1	87	KT245-00004	Hollow Bolt	1
22	KD388-10500	Oil Intake Pipe of Electric Pump(II)	1	44	KDE12E-01002	Air Cleaner Air Intake Pipe	1	66	GB/T5783-2000	Bolt M36 x 30	10				

KIPOR POWER CO., LTD.

11/F Suntime International Mansion, 450 Fushan Road, Pudong, Shanghai, China
 TEL: 86-21-58208881 FAX: 86-21-58208877